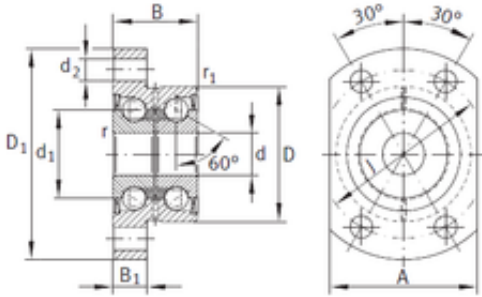




# ASAHI FORGE OF AMERICA BEARING CORP.

6 mm x 19 mm x 12 mm INA ZKLFA0630-2Z  
angular contact ball bearings



Bearing No. ZKLFA0630-2Z

Size	6x19x12 mm
Bore Diameter	6 mm
Outer Diameter	19 mm
Width	12 mm
d	6 mm
D	19 mm
B	12 mm
C	12 mm
Screw	M3
Angle (?)	60 °
d1	12 mm
d2	3,5 mm
r min.	0,3 mm
r1 min.	0,3 mm
A	22 mm
B2	5 mm
D1	30 mm
J	24 mm
da min.	9 mm
da max	15 mm
Weight	0,05 Kg
Dynamic load rating axial (C)	4,9 kN
Static load rating axial (C0)	6,1 kN

ZKLFA0630-2Z Bearing 2D drawings and 3D CAD models