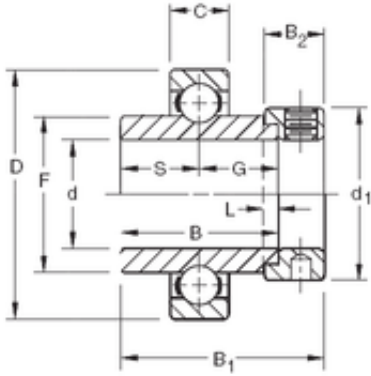




# ASAHI FORGE OF AMERICA BEARING CORP.

33,3375 mm x 72 mm x 37,7 mm Timken  
SM1105K deep groove ball bearings



Bearing No. SM1105K

Size	33.3375x72x37.7 mm
Bore Diameter	33,3375 mm
Outer Diameter	72 mm
Width	37,7 mm
d	33,3375 mm
D	72 mm
B	37,7 mm
C	17 mm
d1	54 mm
B1	51,2 mm
B2	17,46 mm
F	46,13 mm
G	18,85 mm
L	4 mm
S	18,85 mm
Weight	0,589 Kg
Basic dynamic load rating (C)	28,5 kN

SM1105K Bearing 2D drawings and 3D CAD models